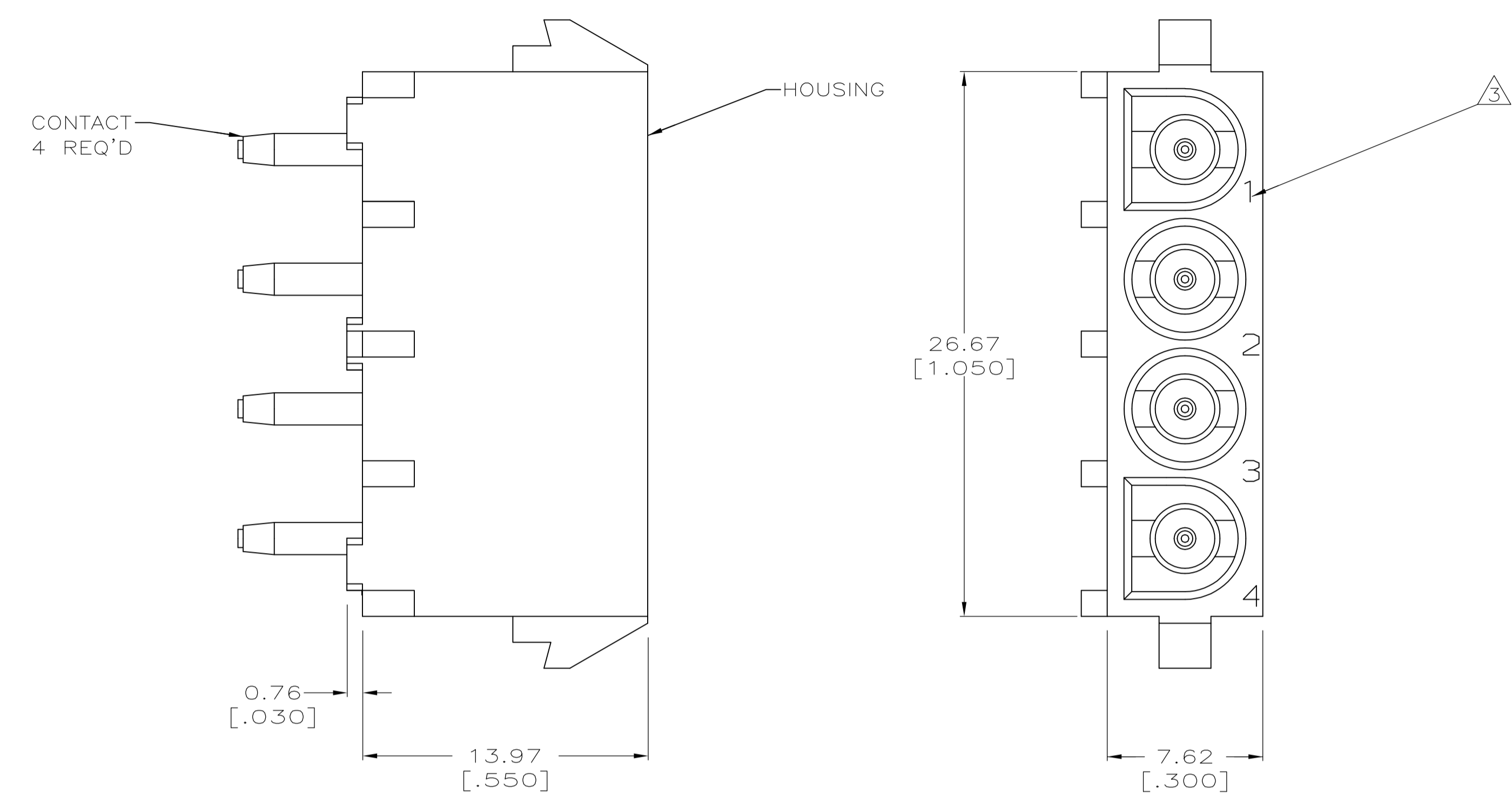
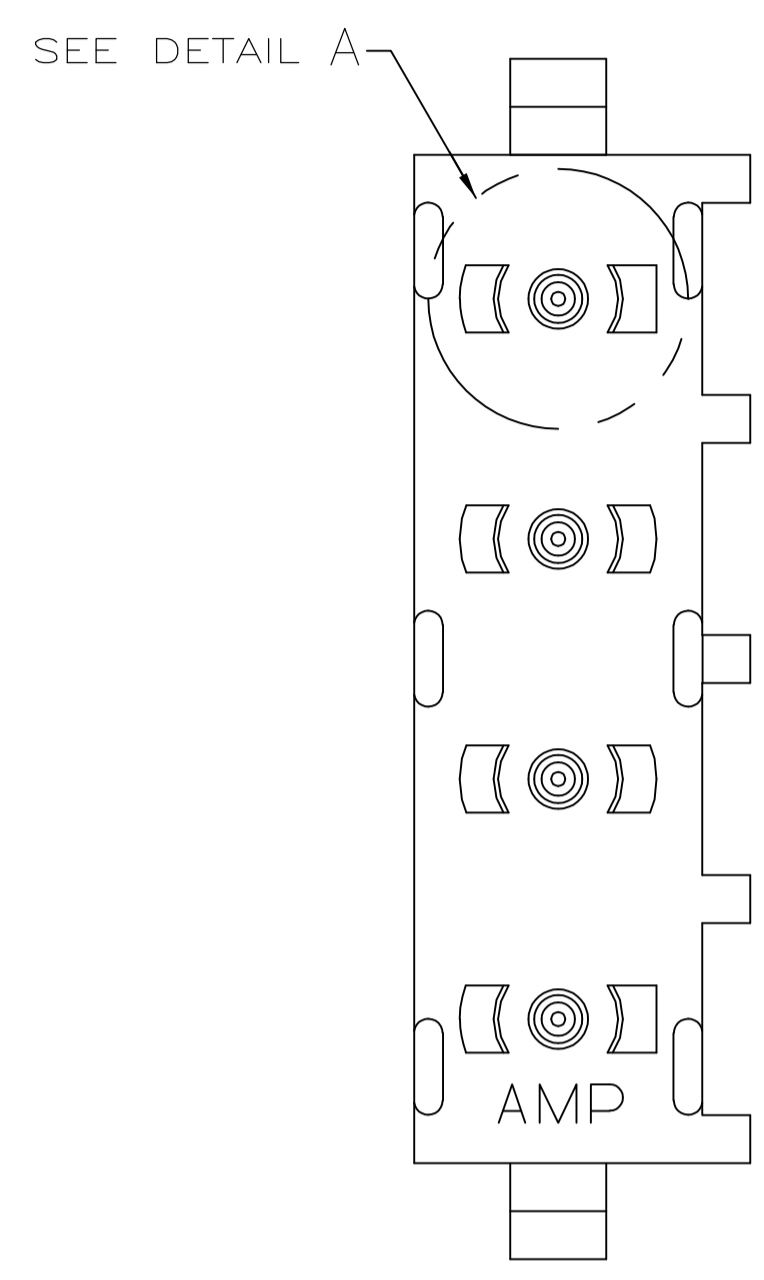
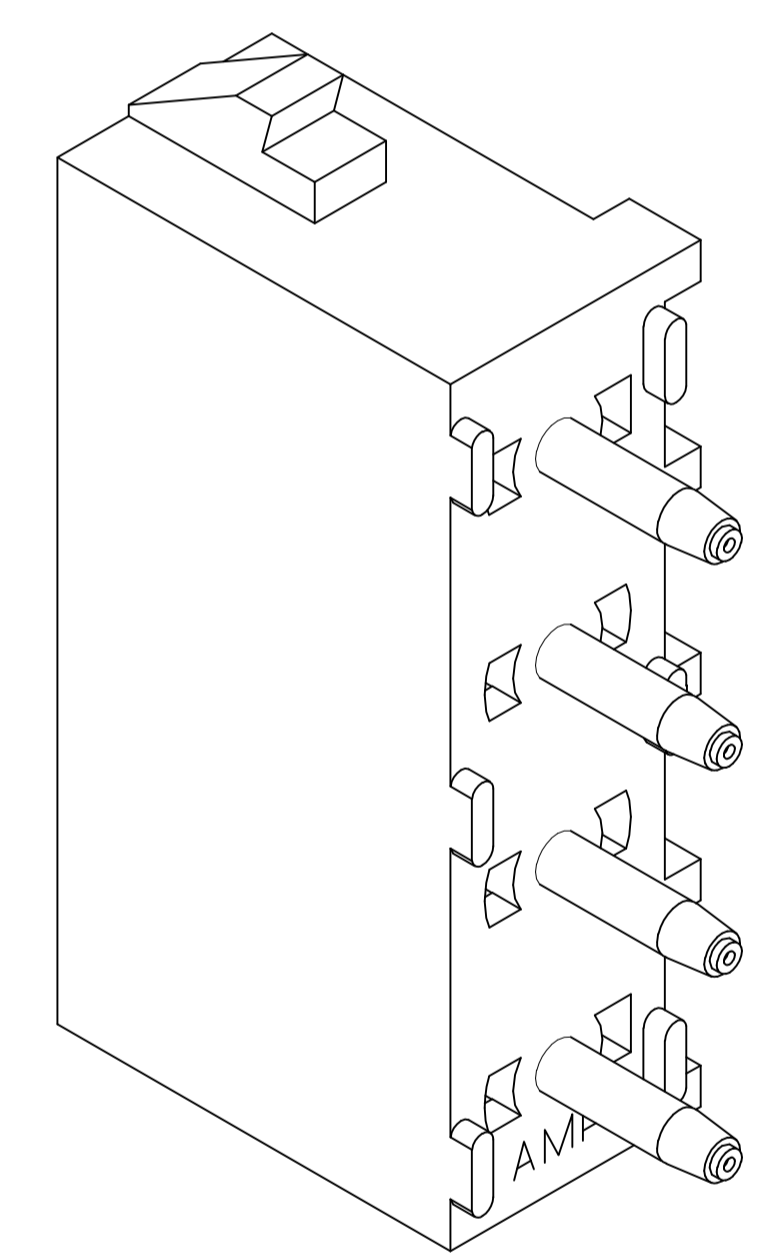
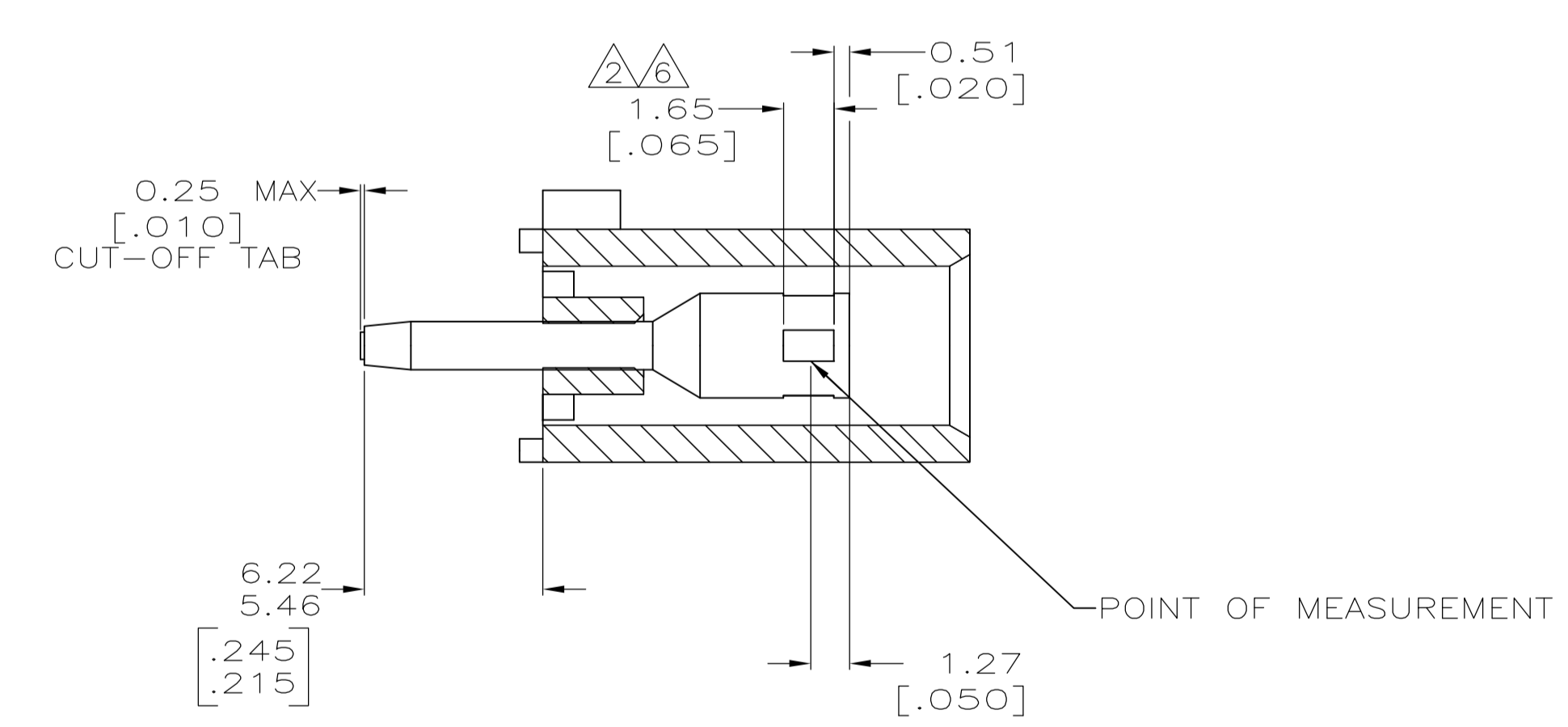


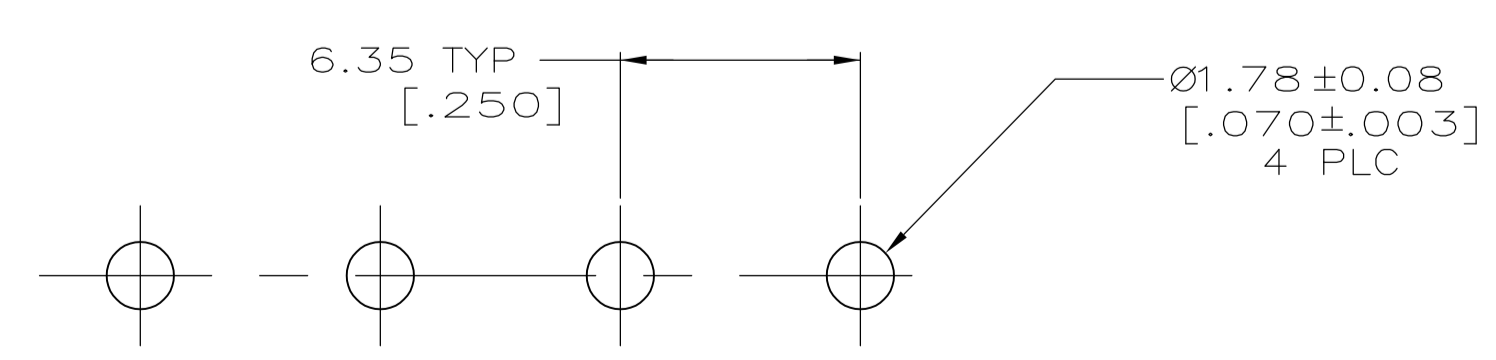
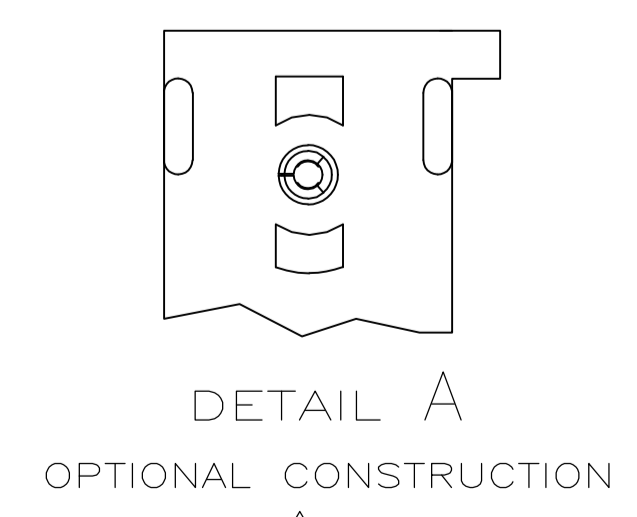
LOC		DIST		REVISIONS			
CM	00	REV	DATE	BY	CHK	APP'D	
J		REVISED PER EC 0G3B-1094-04	18FEB05	KW	SR		
J1		REV PER ECO-09-021826	08SEP09	KK	AEG		



- PARTS COMPLY TO AMP SOLDERABILITY SPECIFICATION 109-11-3.
- CONTACT IS PLATED OVERALL WITH 0.00127 [.000050] NICKEL, THEN 0.00076 [.000030] GOLD OVER CONTACT LENGTH INDICATED AND MATTE TIN LEAD ON SOLDER TAIL END.
- CIRCUIT IDENTIFICATION CHARACTERS ARE ADJACENT TO THE INDICATED CAVITIES, BUT LOCATION AND ORIENTATION MAY DIFFER FROM PRINT.
- DIMENSIONS IN BRACKETS ARE IN INCHES.
- DRAIN HOLES LOCATED AS SHOWN. OPTIONAL CONSTRUCTION- ALL DRAIN HOLES LOCATED 90° AS SHOWN IN DETAIL A.
- CONTACT IS PLATED OVERALL WITH 0.00127 [.000050] NICKEL, THEN 0.00076 [.000030] GOLD OVER CONTACT LENGTH INDICATED AND MATTE TIN ON SOLDER TAIL END.
- OBsolete PARTS: OBSOLETE CIS STREAMLINING PER D.RENAUD/D.SINISI



3-DIMENSIONAL MODEL NTS



RECOMMENDED MOUNTING HOLE PATTERN FOR 3.18 [.125] THICK P.C. BOARD

<del>PHOSPHOR BRONZE, GOLD</del>	<del>NYLON,UL94V-2,NATURAL</del>	<del>-350988-5-</del>
<del>PHOSPHOR BRONZE, PRE-TIN</del>	<del>NYLON,UL94V-2,NATURAL</del>	<del>350988-4</del>
<del>PHOSPHOR BRONZE, GOLD</del>	<del>NYLON,UL94V-2,NATURAL</del>	<del>-350988-3-</del>
CONTACT MATERIAL AND FINISH	HOUSING MATERIAL	PART NUMBER

**METRIC**

THIS DRAWING IS A CONTROLLED DOCUMENT.		DIN 9139	10-05-98	Tyco Electronics Corporation Greensboro, NC 27409	
DIMENSIONS: mm [INCHES]		TRULL	10-05-98	NAME: SOCKET HEADER ASSEMBLY, 4 CIRCUIT UNIVERSAL MATE-N-LOK™	
TOLERANCES UNLESS OTHERWISE SPECIFIED:		APPLICATION SPEC		SIZE: A1	CAGE CODE: 00779
0 PLC	± -	WEIGHT		SCALE: 5:1	SHEET 1 OF 1
1 PLC	± -	CUSTOMER DRAWING			REV J1
2 PLC	± 0.13 [.005]				
3 PLC	± -				
4 PLC	± -				
ANGLES	± 0±30°				